

# Before & After Kitchens

## Before

The kitchen offered a nice view, but its small size and dated appliances made it inadequate for two cooks who like to entertain.



# Bigger & Better

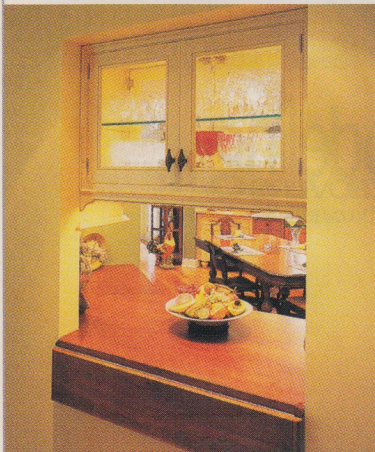
This new kitchen becomes a family favorite

BY BERNADETTE BACZYNSKI  
PHOTOGRAPHS BY OLSON PHOTOGRAPHS, LLC

A new kitchen with no center island? It's not an oversight—the newly-married owners, Sylvia Nichols and Bruce Klein, wanted it that way. “They were combining households,” say designers Karen Sciascia and Martha Gargano, of the interior design firm A Matter of Style in Cheshire, Connecticut.

Sylvia and Bruce brought a lifetime of possessions to their marriage—there was no room for a center island. “One of their two dining sets occupies that area,” says Sciascia. To accommodate their combined furnishings, they decided to expand Sylvia's compact Cape Cod

**LEFT:** A pass-through with a storage cabinet above opens onto the formal dining room. The homeowners can access the cabinet from both rooms. On the dining-room side, there's a drop-leaf counter that's out of the way when not in use.





An overhead beam marks the perimeter of the old kitchen. Instead of an island, a dining table is used for breakfast and snacks. Designed with work space for two cooks, the granite countertops have extra-deep overhangs to prevent spills from dripping onto the cabinets.



## What Was Done

- Added 220 square feet to the old kitchen
- Installed custom storage units throughout the new kitchen addition
- Replaced linoleum floors with cherrywood
- Designed two different types of cabinets and counters to define the food-preparation and serving spaces
- Built pass-throughs and open doorways to let natural light into the windowless kitchen
- Left the center of kitchen open to accommodate a table as the main eating area in the room



**FAR LEFT:** The pass-through opens onto the formal dining room; a warming drawer below keeps food toasty until it's ready to be served. **ABOVE:** A handy bar sink was installed next to the refrigerator. **LEFT:** Over the cooktop, Sylvia Nichols' collection of Spanish tiles were set among limestone tiles.

home, tripling its size. A major part of the remodel was expanding the old kitchen area into the new space.

Working closely with Sylvia, an award-winning florist who owns The Window Box, a store in Cheshire, Gargano and Sciascia drew up plans for the new kitchen. Both Sylvia and Bruce cook, but he's the avid chef. Along with a roomier kitchen for family and guests, they also

needed storage and display space for items collected in their travels.

Expanding the kitchen included working the overhead structural beam into the new plan. Architect Stuart Lathers, of New Haven, Connecticut, decided to place the addition at an angle to that beam. The new cherrywood floors run parallel with the beam, emphasizing the angular position of the room. In the main kitchen area, the cabinets are glazed cherrywood with granite counters; the cabinets adjacent to the dining room are maple, painted yellow and glazed, with cherry countertops. A pantry holds a floor-to-ceiling spice cabinet, and the display cabinets feature three different styles of cabinet hardware. ■